



HITCH CLAMP

PATENT PENDING

Quickly connect/disconnect Bicycle from Trailers
Model No. KS-HCL-R and KS-HCL-L

ASSEMBLY INSTRUCTIONS

Please read & save all instructions contained in this booklet.
Examine all carton contents and wrappings carefully before assembly.

READY, SET...GO!™

Easy hauling is yours in a snap with your new Hitch Clamps by KOOL-STOP INTERNATIONAL, INC. A pair of KOOL-STOP Hitch Clamps can easily be fastened to your bicycle frame. After installation of your hitch clamps to your bike, you can connect/disconnect your bike to your KOOL-STOP trailers in a matter of seconds without using any tools.

Your New KOOL-STOP Hitch Clamps includes these features:

- Extra durable construction to meet the highest of safety and quality standards.
- Lightweight
- Assembles to your bike in minutes.
- Quick connect/disconnect your KOOL-STOP trailers to your bike.
- Color: black

SAFETY CHECK LIST:

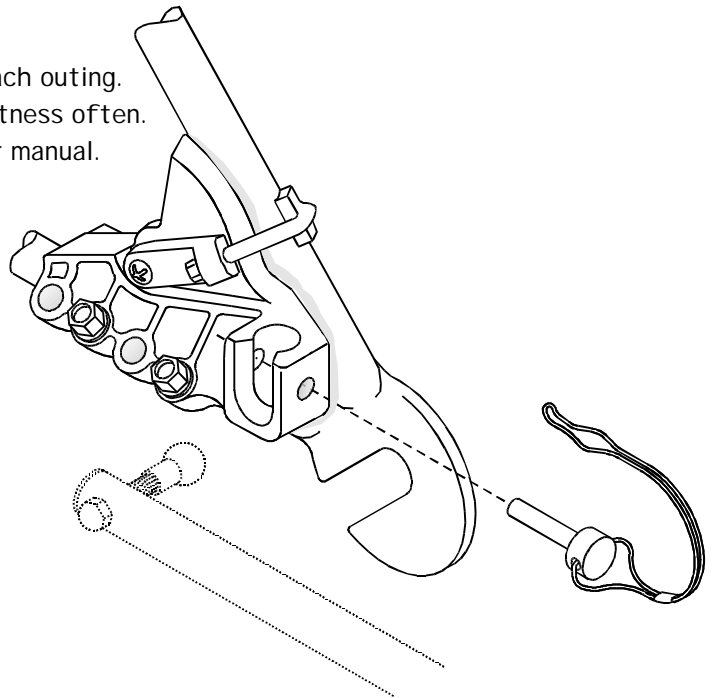
1. Tighten and look over trailer and bicycle before each outing.
2. Hitch Clamps attachment & fasteners - check tightness often.
3. For maximum towing weight, refer to trailer owner manual.

THINK SAFE AND BE SAFE!

- Avoid dangerous routes and situations.
- Control speed-Maximum 20 m.p.h., 30 k.p.h.
- Negotiate corners with care.

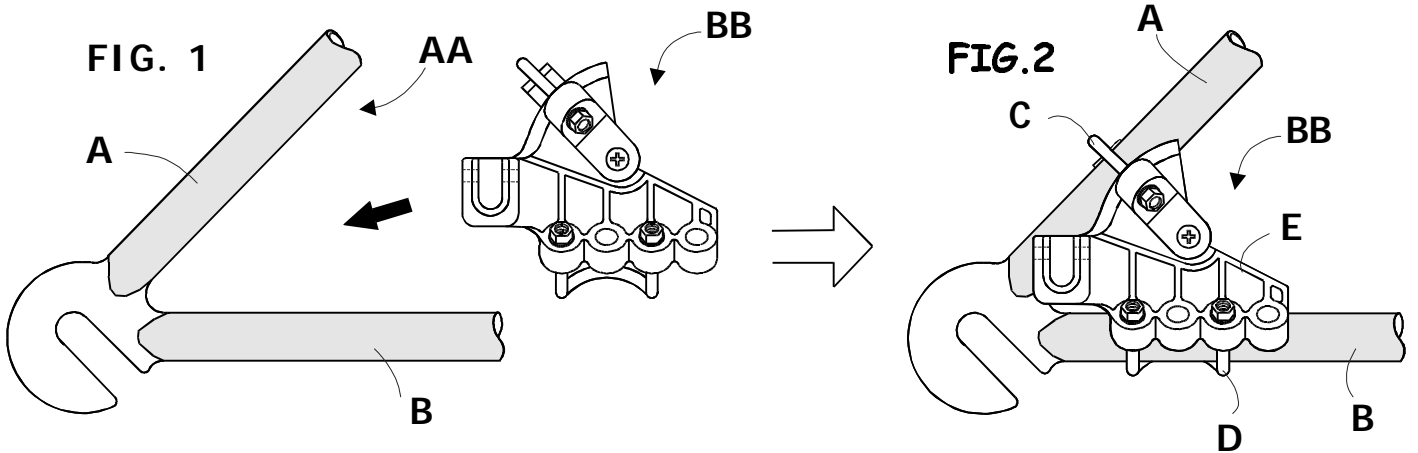
IMPORTANT!

Any use of this product not expressly stated in the owners manual is strictly prohibited.



INSTALLATION INSTRUCTIONS

It is important to use the proper tool to install and tighten your KOOL STOP Hitch Clamps to your bike. To tighten clamps you need a 10mm hex socket screwdriver. If you use open box or ratchet type wrench to tighten clamps, do not overtighten.

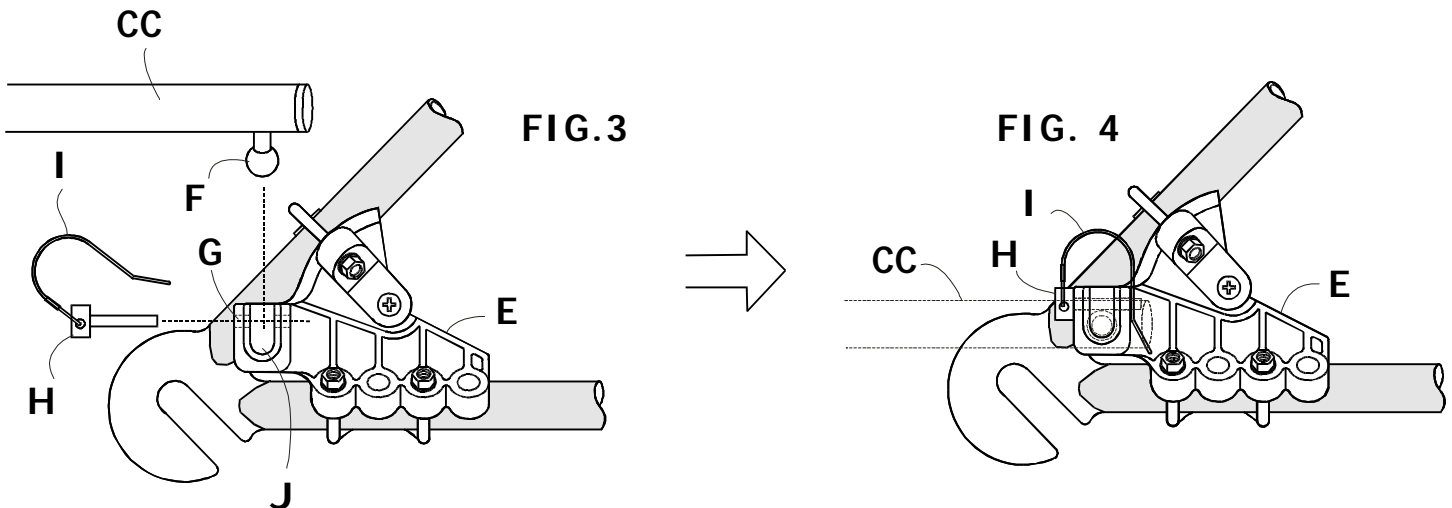


SECURING THE HITCH CLAMPS TO YOUR BIKE FRAME - FIG. 1 & FIG. 2

- Place your hitch clamp **BB** on your bicycle rear frame **AA**. Make sure the hitch clamp body **E** is placed & fitted all the way to the corner of the rear frame between frame **A** and **B** before fastening the clamps.
- Clamp down the hook-clamp **C** to upper frame **A**.
- Clamp down the U- Clamp **D** to the lower frame **B**.

NOTE:

Do not over tighten the clamps.



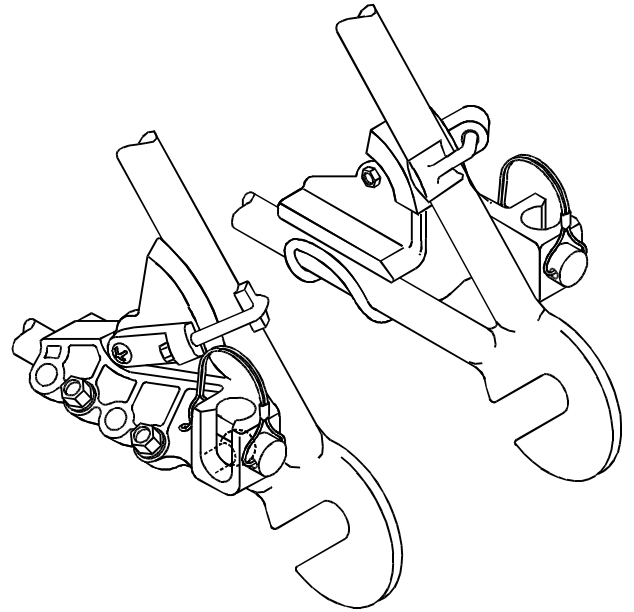
CONNECTING TRAILER TONGUE TO YOUR BIKE HITCH CLAMPS - FIG. 3 & FIG. 4

- Place and insert trailer tongue **CC** and its ball rod **F** into socket cavity **J** of hitch clamp body **E**. Adjust ball rod to proper frame width.
- Insert snapper pin **H** into hole **G** and secure with wire loop **I** as shown in FIG. 4.

ASSEMBLED VIEW

KOOL-STOP HITCH CLAMP

PARTS LIST FOR HITCH CLAMP (RIGHT SIDE)			
No.	PART No.	DESCRIPTION	QTY.
1	HC-1010-R	HITCH CLAMP COMPLETE (RIGHT)	1
2	HC-1020-R	HITCH CLAMP BODY (RIGHT)	1
3	HC-1030	U-CLAMP	1
4	HC-1040	HOOK-CLAMP	1
5	HC-1050	HOOK-CLAMP HOLDER	1
6	HC-1060	SNAPPER PIN	1
7	HC-1070	BOLT	1
8	HC-1080	HEX NUT	1
9	HC-1090	BARREL, HEX NUT	3
10	HC-1200	FLAT WASHER	3



PARTS LIST FOR HITCH CLAMP (LEFTSIDE)			
No.	PART No.	DESCRIPTION	QTY.
1	HC-1010-L	HITCH CLAMP COMPLETE (LEFT)	1
2	HC-1020-L	HITCH CLAMP BODY (LEFT)	1
3	HC-1030	U-CLAMP	1
4	HC-1040	HOOK-CLAMP	1
5	HC-1050	HOOK-CLAMP HOLDER	1
6	HC-1060	SNAPPER PIN	1
7	HC-1070	BOLT	1
8	HC-1080	HEX NUT	1
9	HC-1090	BARREL, HEX NUT	3
10	HC-1200	FLAT WASHER	3

DETAILED EXPLODED VIEW

KOOL-STOP HITCH CLAMP

